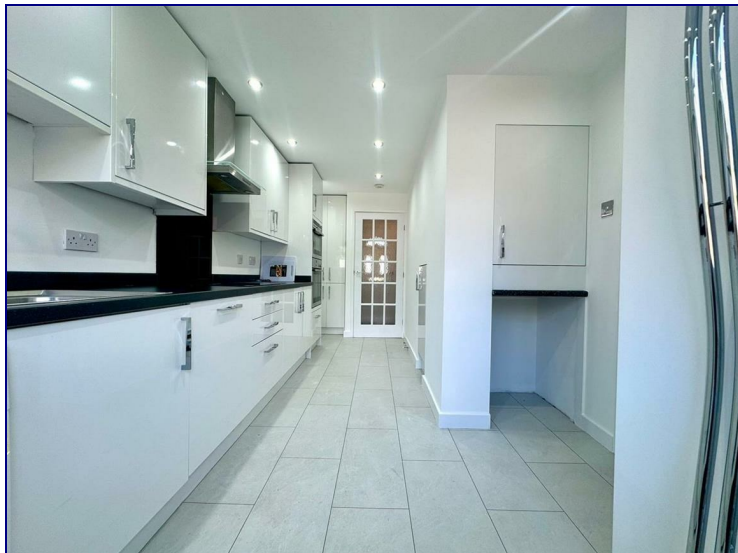


Shaw Close, Waltham Cross, EN8 0HD



£1,900 PCM

Well presented Three Bedroom Terrace House, Available Now.

This newly refurbished property offers a great size lounge, modern fitted kitchen with appliances leading to an easily maintainable approx 35ft rear garden, masses of storage, three piece bathroom suite, three bedrooms with fitted storage to the master. Additional benefits include newly fitted flooring throughout aswell as shutter blinds to all rooms.

Parking is non restricted to the front of the property.

Occupants will benefit from the A10 being just moments away giving great access to surrounding areas. Brookfield Retail Park is within a short distance offering an array of shops and local amenities are also within walking distance.



